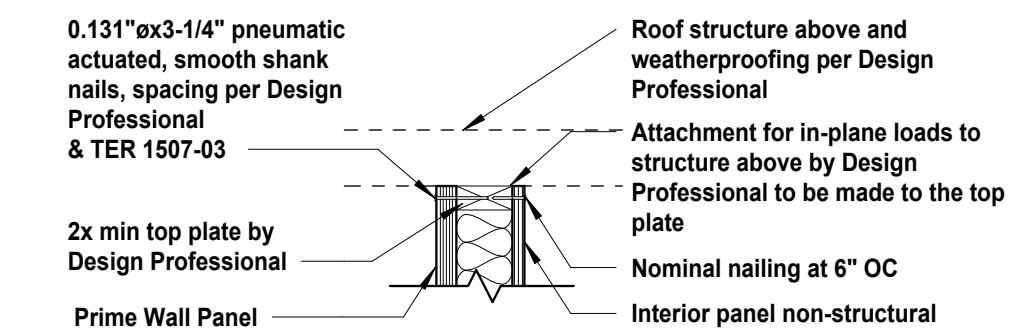


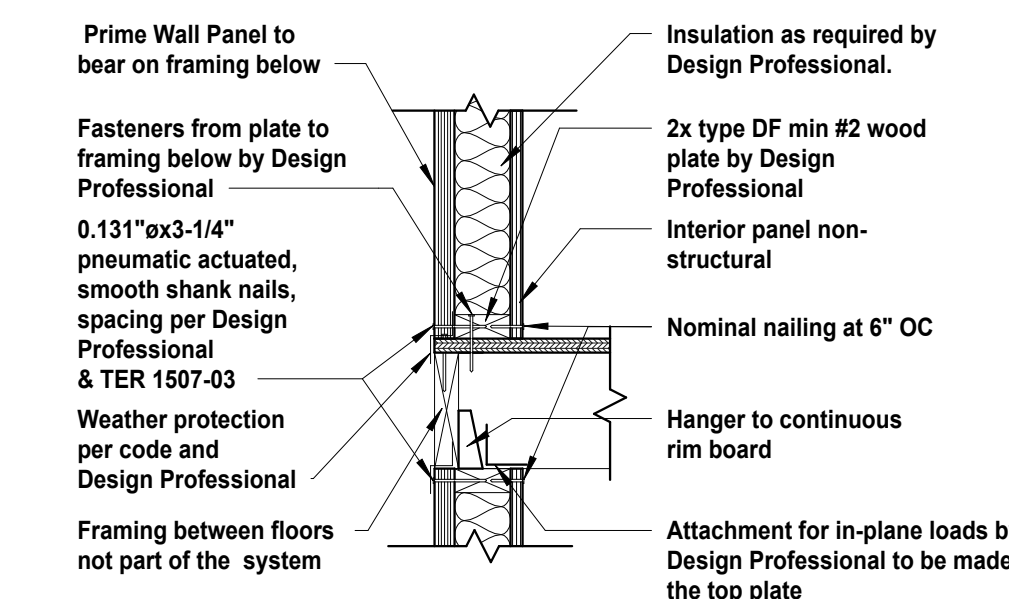


www.GBT.build



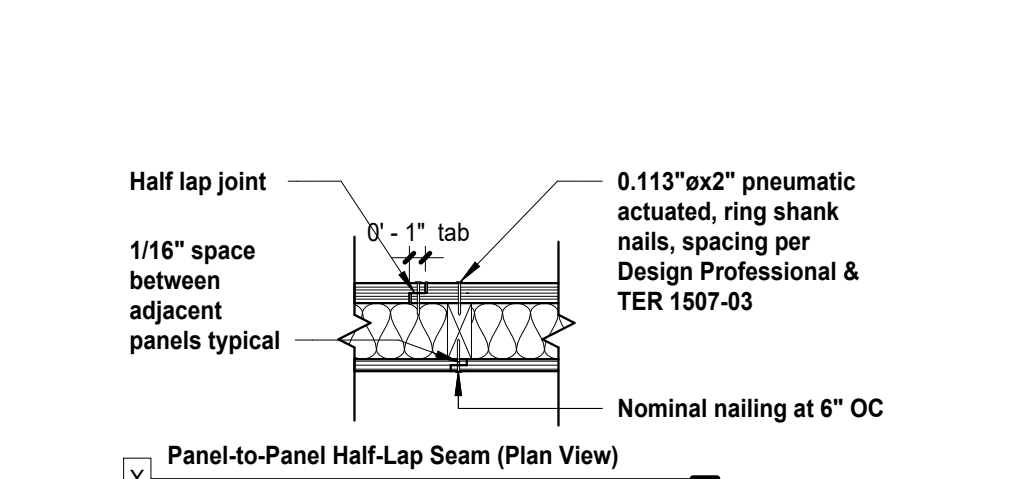
Top Plate (Section View)

1 Top Plate
1" = 1'-0"

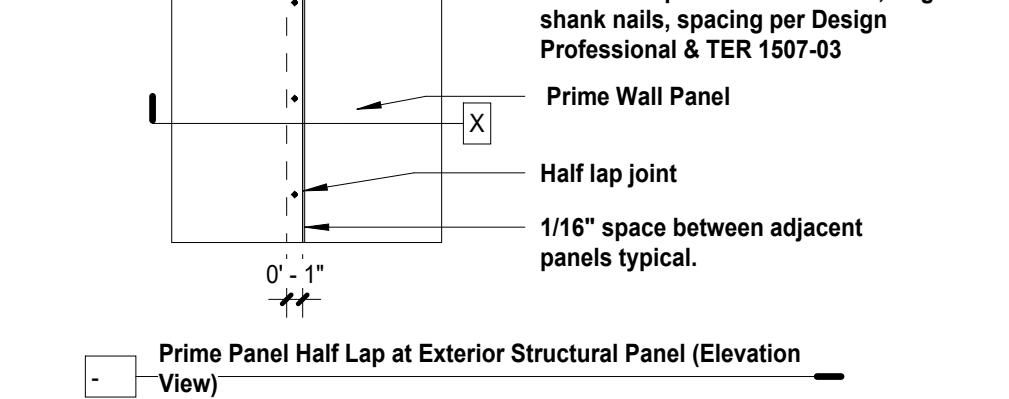


Bottom Plate on Framing (Section View)

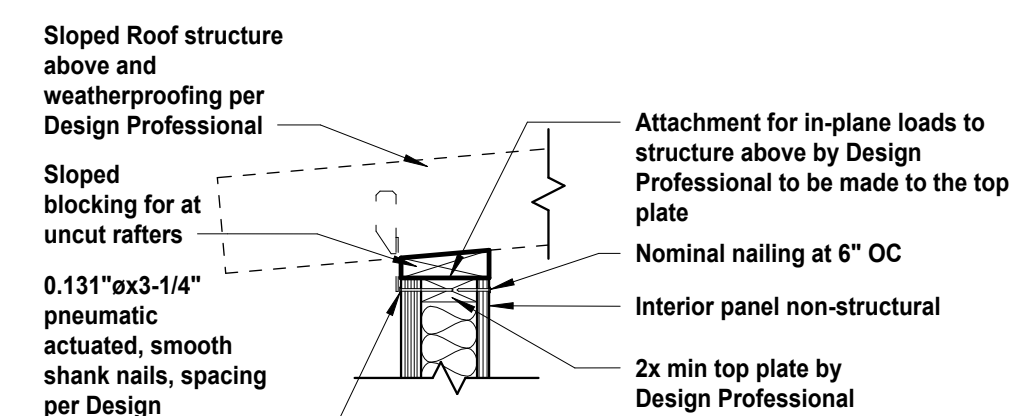
6 Framing Between Floors
1" = 1'-0"



Panel-to-Panel Half-Lap Seam (Plan View)

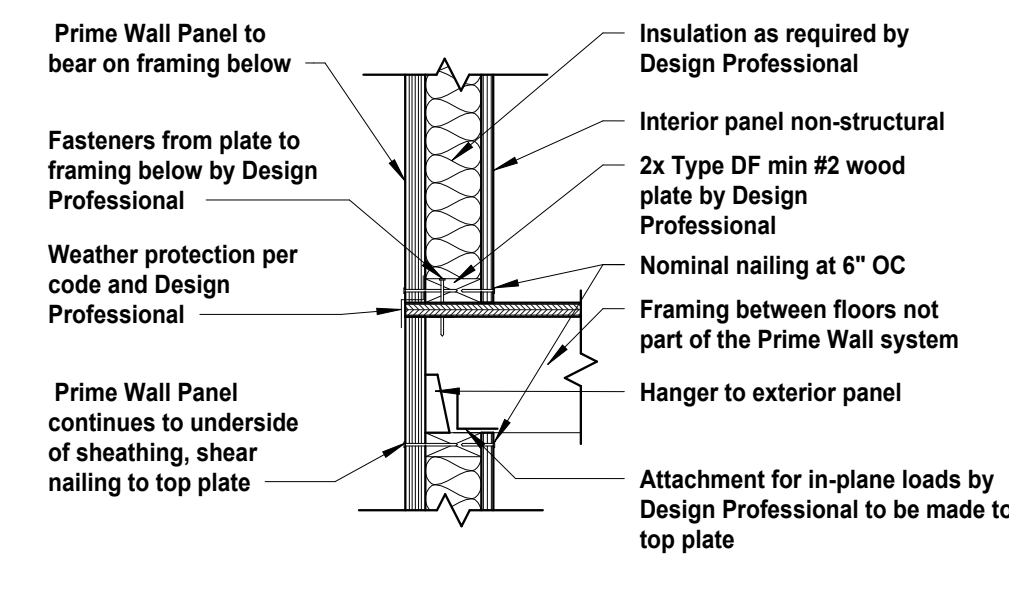


11 Panel to Panel Half Lap
1" = 1'-0"



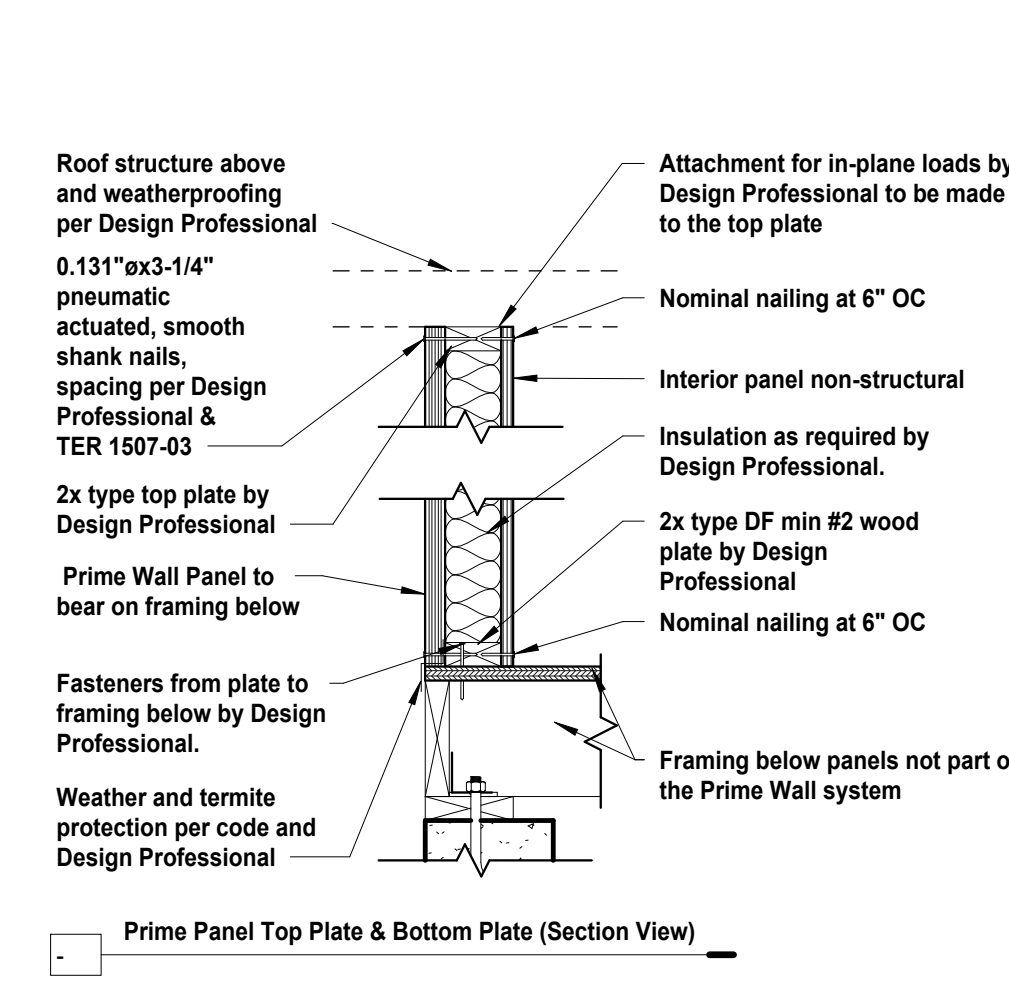
Top Plate Sloped Block (Section View)

2 Top Plate Alternate
1" = 1'-0"

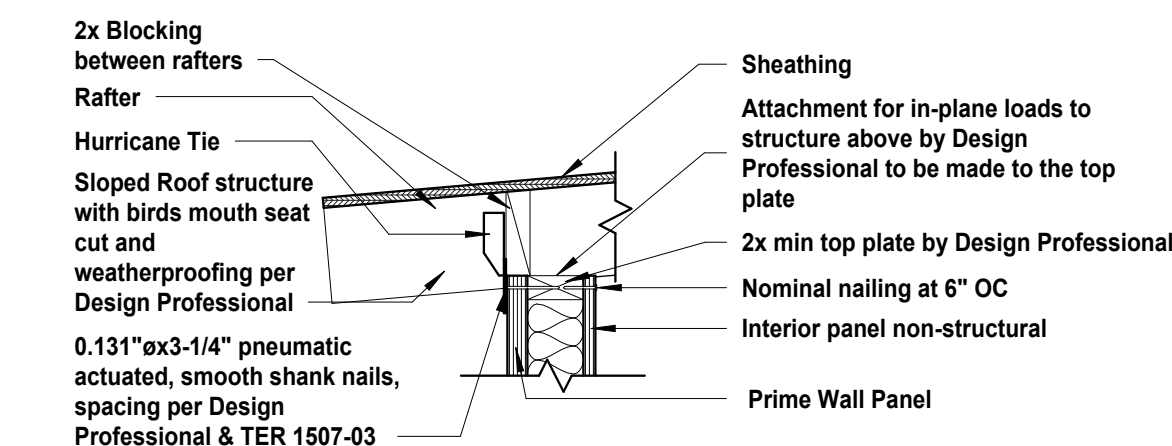


Bottom Plate on Framing (Section View)

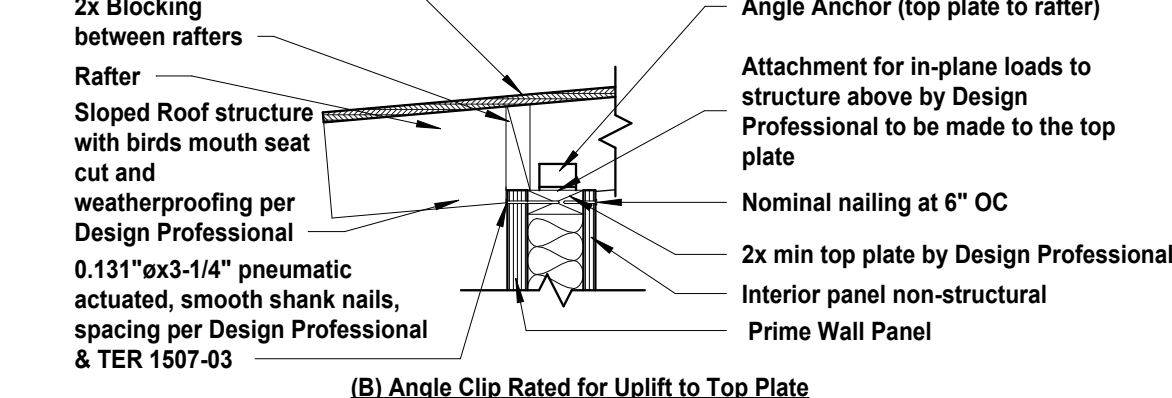
7 Framing Between Floors Alternate
1" = 1'-0"



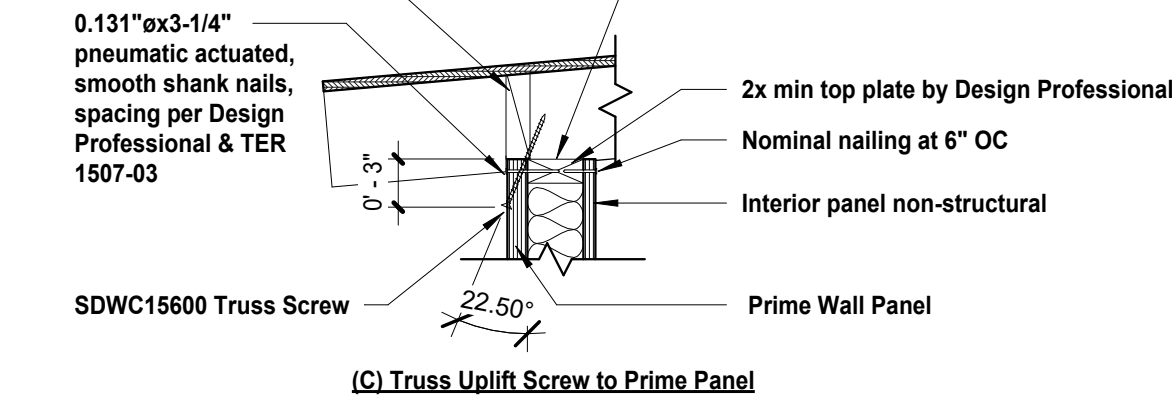
12 Top and Bottom Plate
1" = 1'-0"



(A) Hurricane Tie to Prime Panel

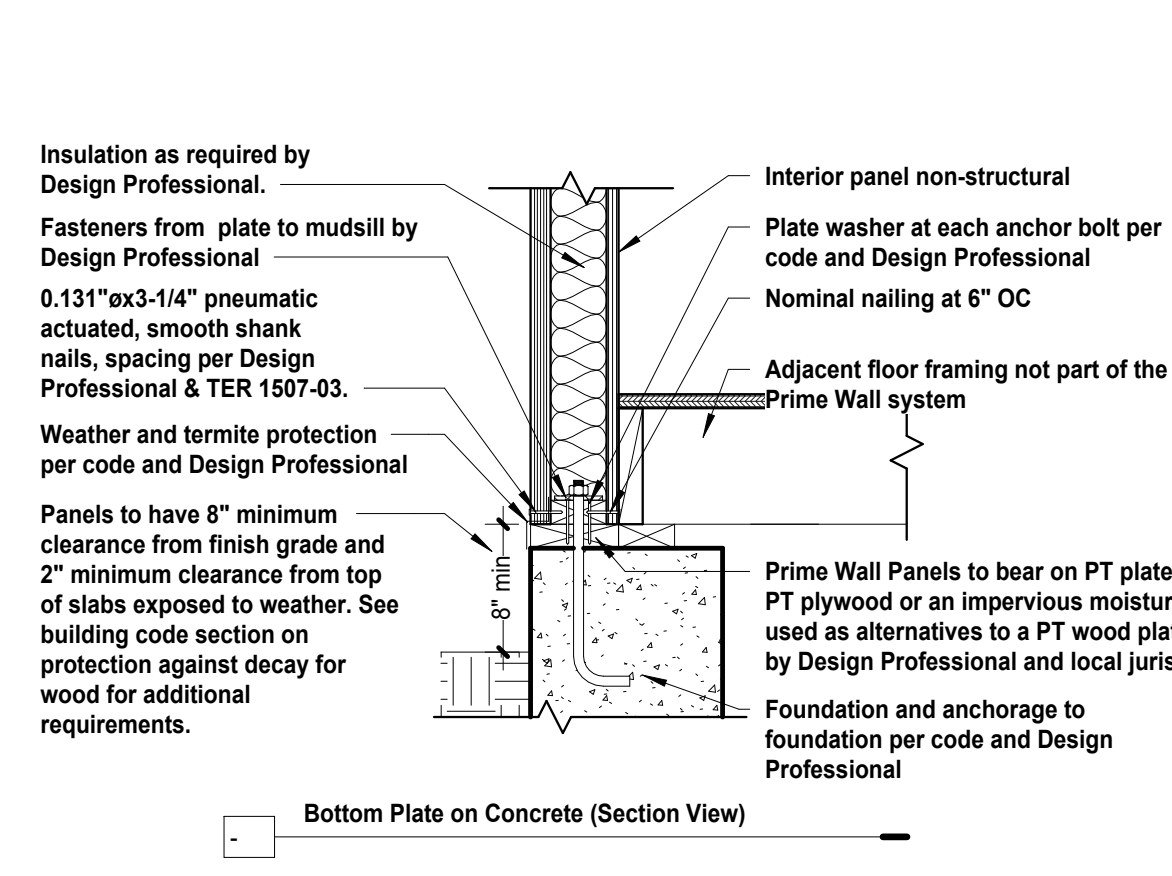


(B) Angle Clip Rated for Uplift to Top Plate

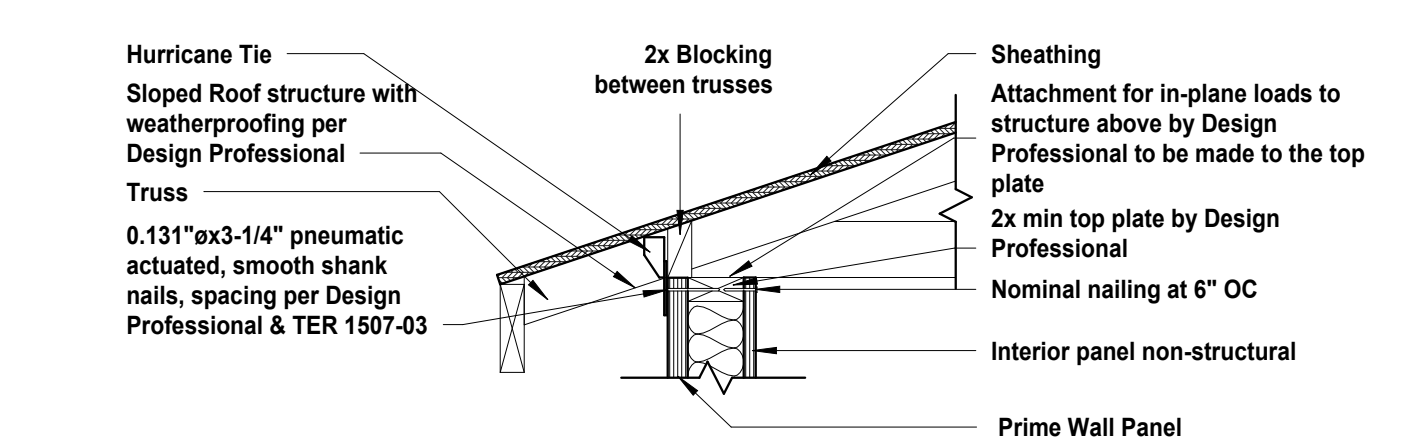


(C) Truss Uplift Screw to Prime Panel

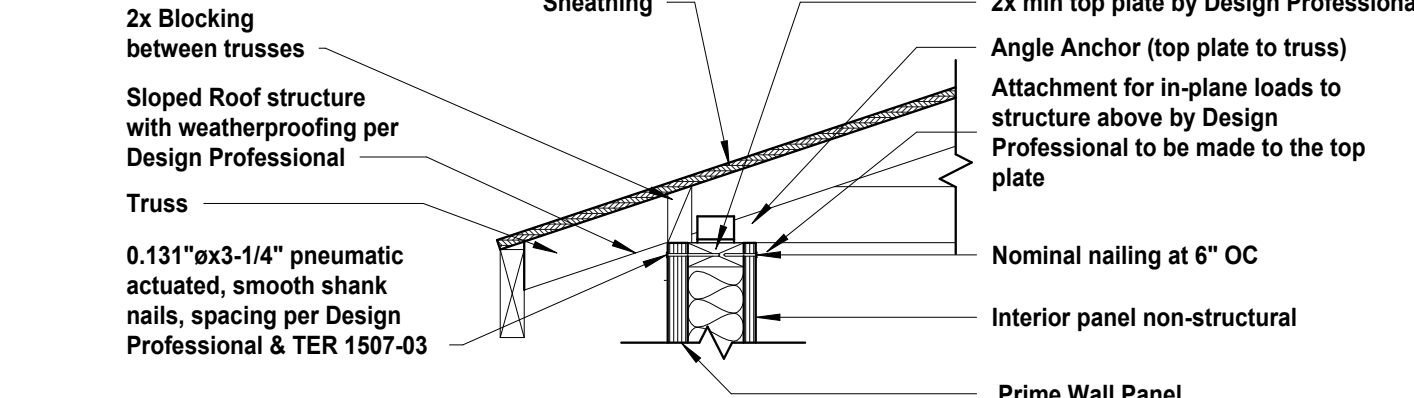
5 Top Plate Alternate 4
1" = 1'-0"



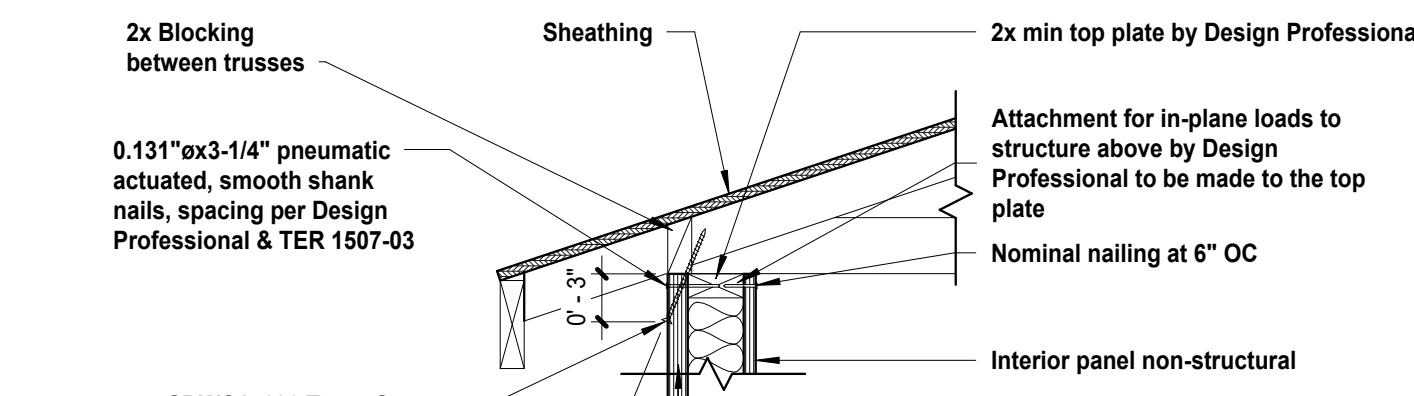
13 Bottom Plate Concrete Alternate
1" = 1'-0"



(A) Hurricane Tie to Prime Panel

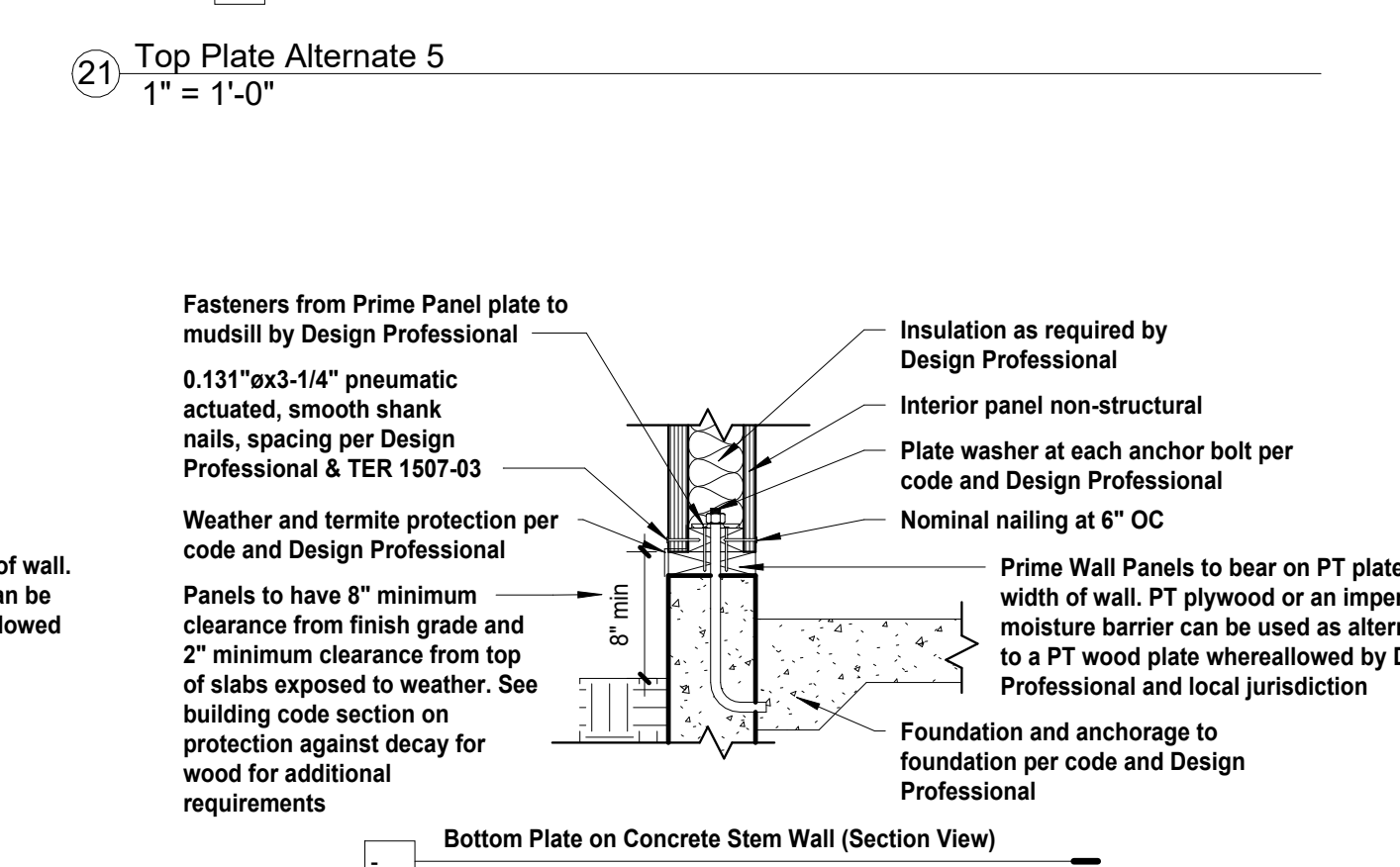


(B) Angle Clip Rated for Uplift to Top Plate

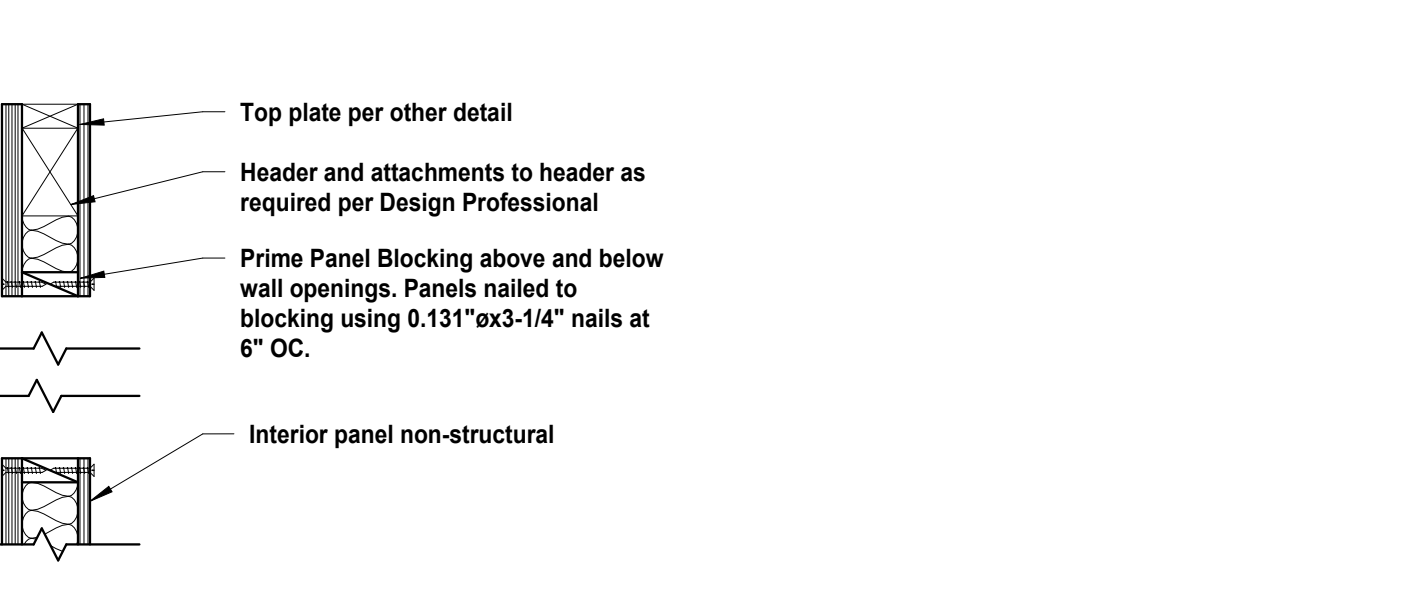


(C) Truss Uplift Screw to Prime Panel

21 Top Plate Alternate 5
1" = 1'-0"

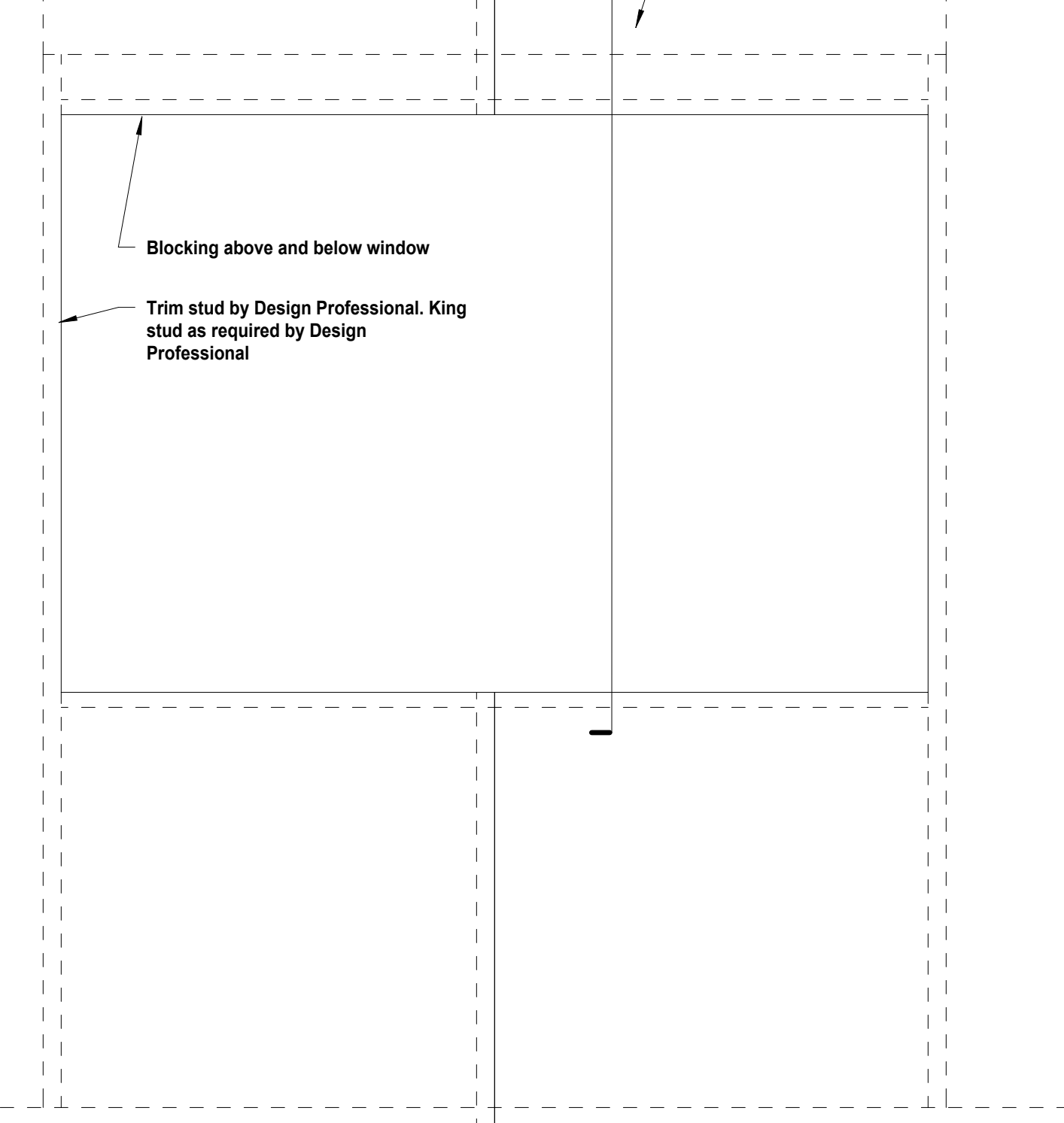


8 Bottom Plate Concrete
1" = 1'-0"



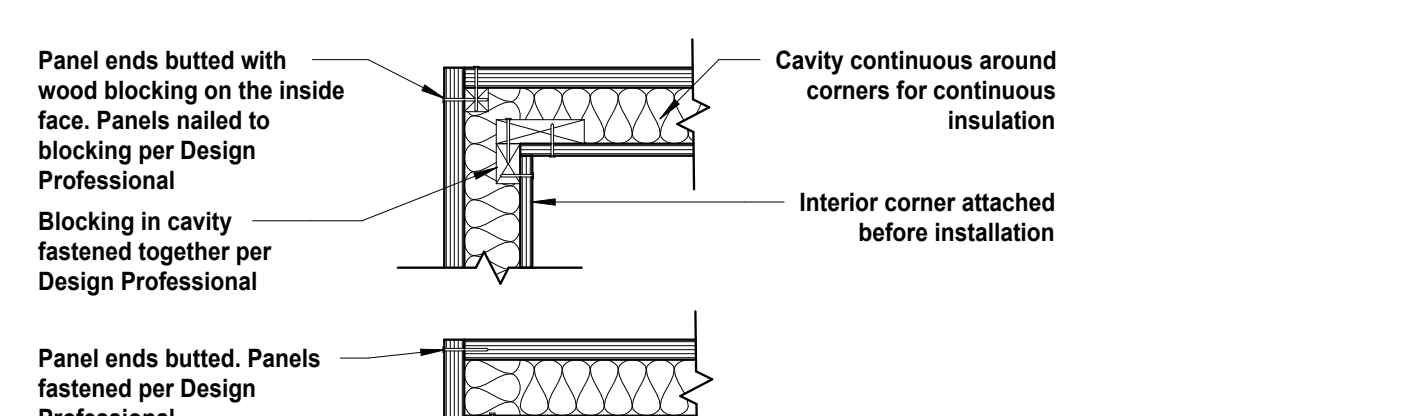
Bottom Plate on Framing (Section View)

9 Bottom Plate on Framing
1" = 1'-0"



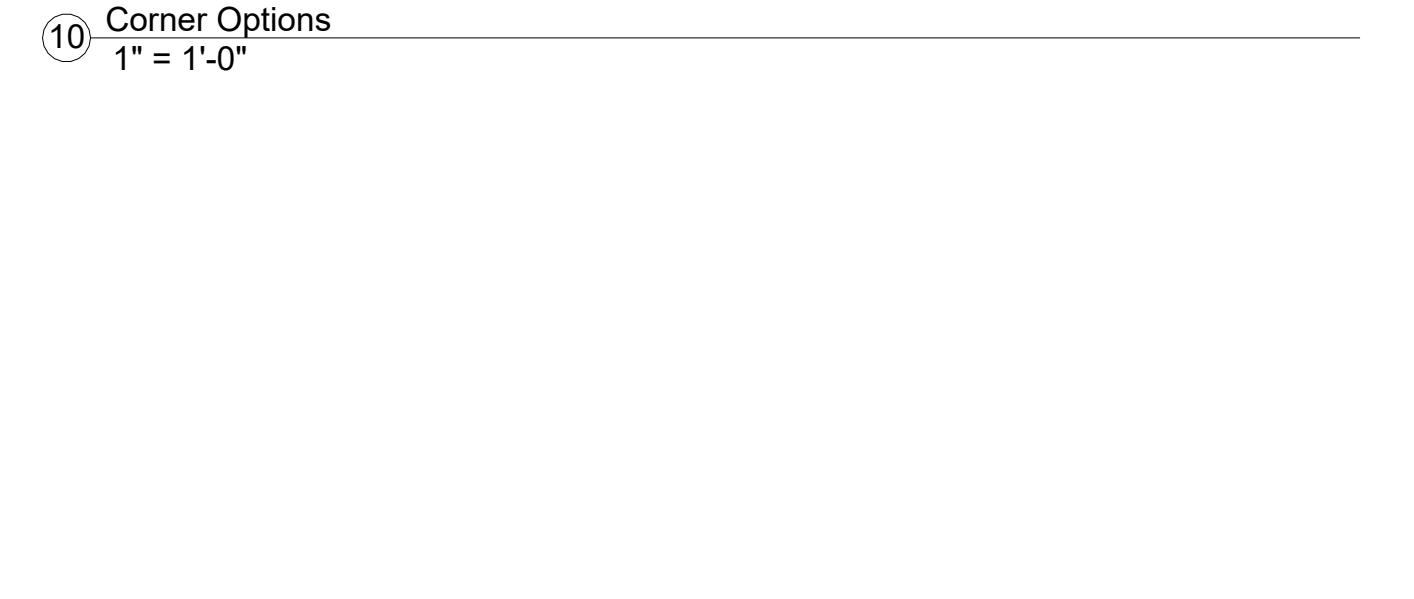
Prime Panel Window Opening with Conventional Header (Elevation View)

17 Window Opening with Conventional Header by Design Professional
1" = 1'-0"



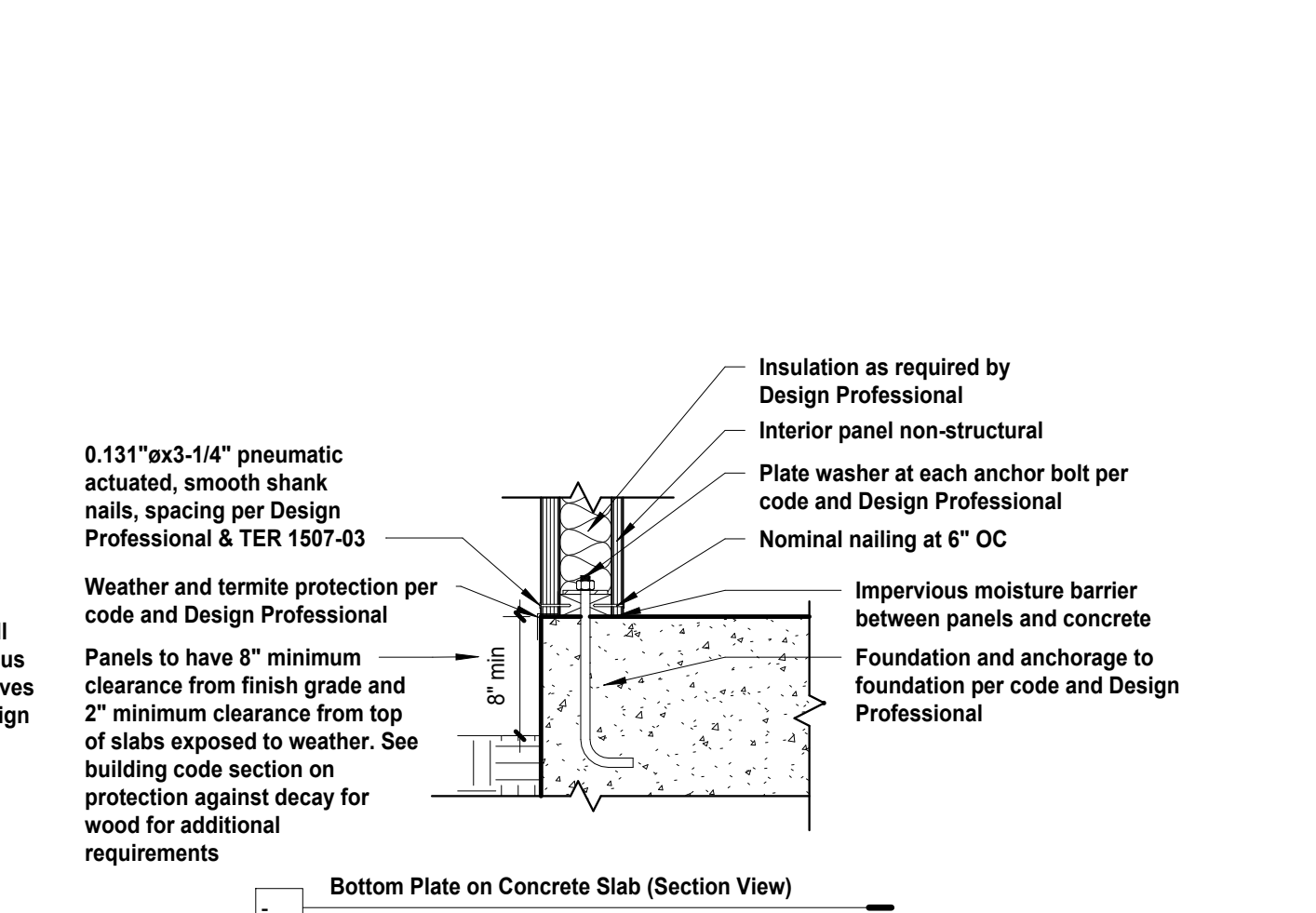
Prime Panel Corner Options (Plan View)

10 Corner Options
1" = 1'-0"

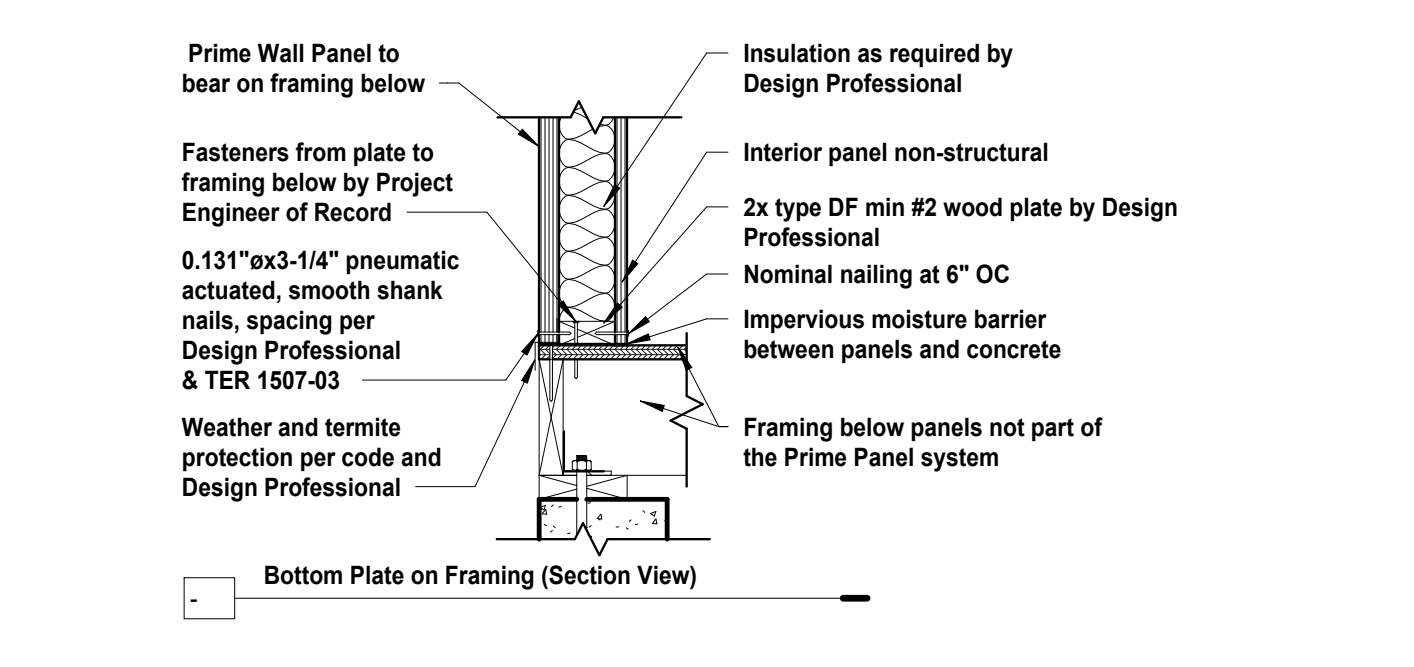


Bottom Plate on Concrete Slab (Section View)

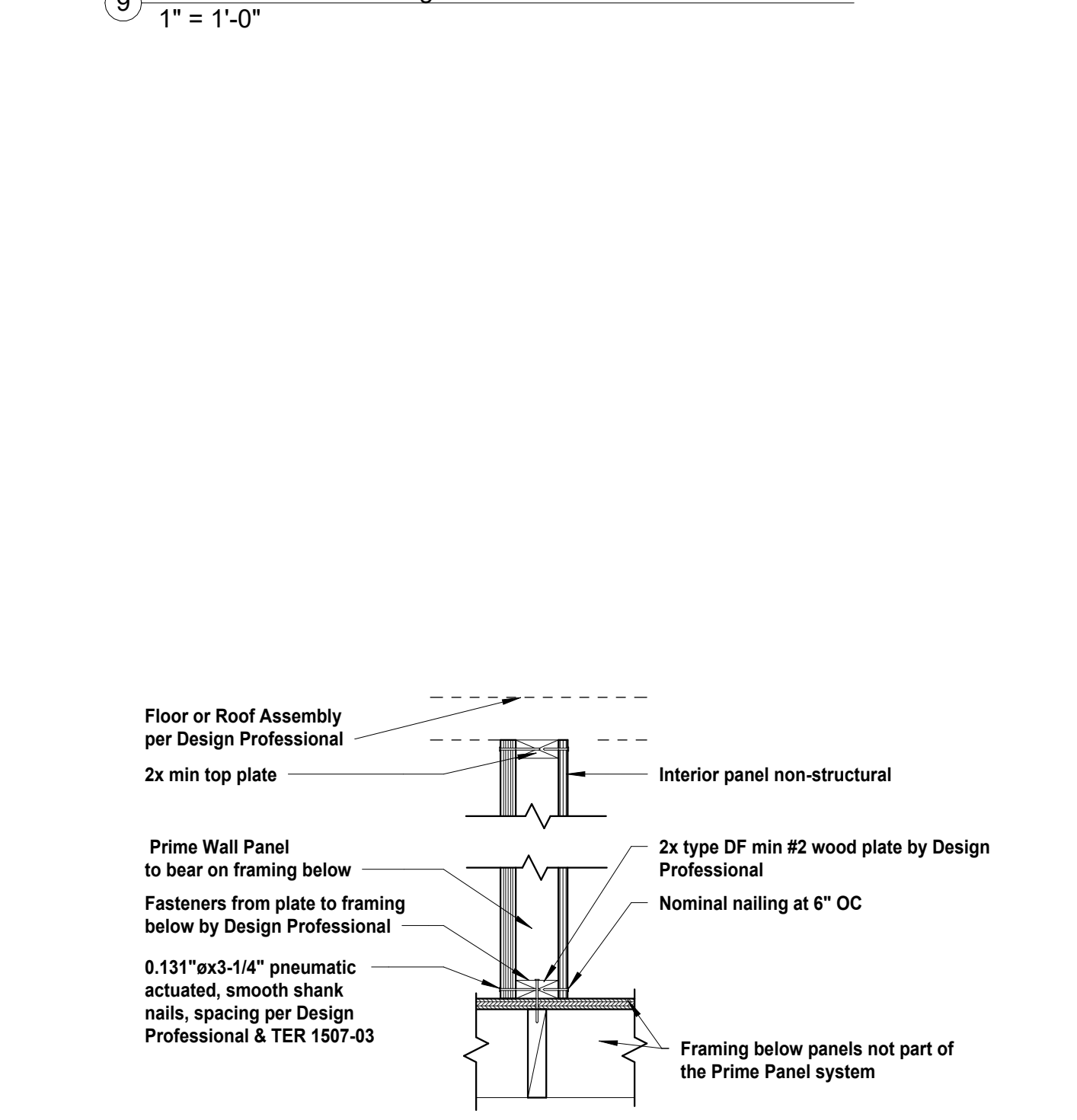
20 T&B plate - Interior
1" = 1'-0"



14 On-Edge Headers
1" = 1'-0"



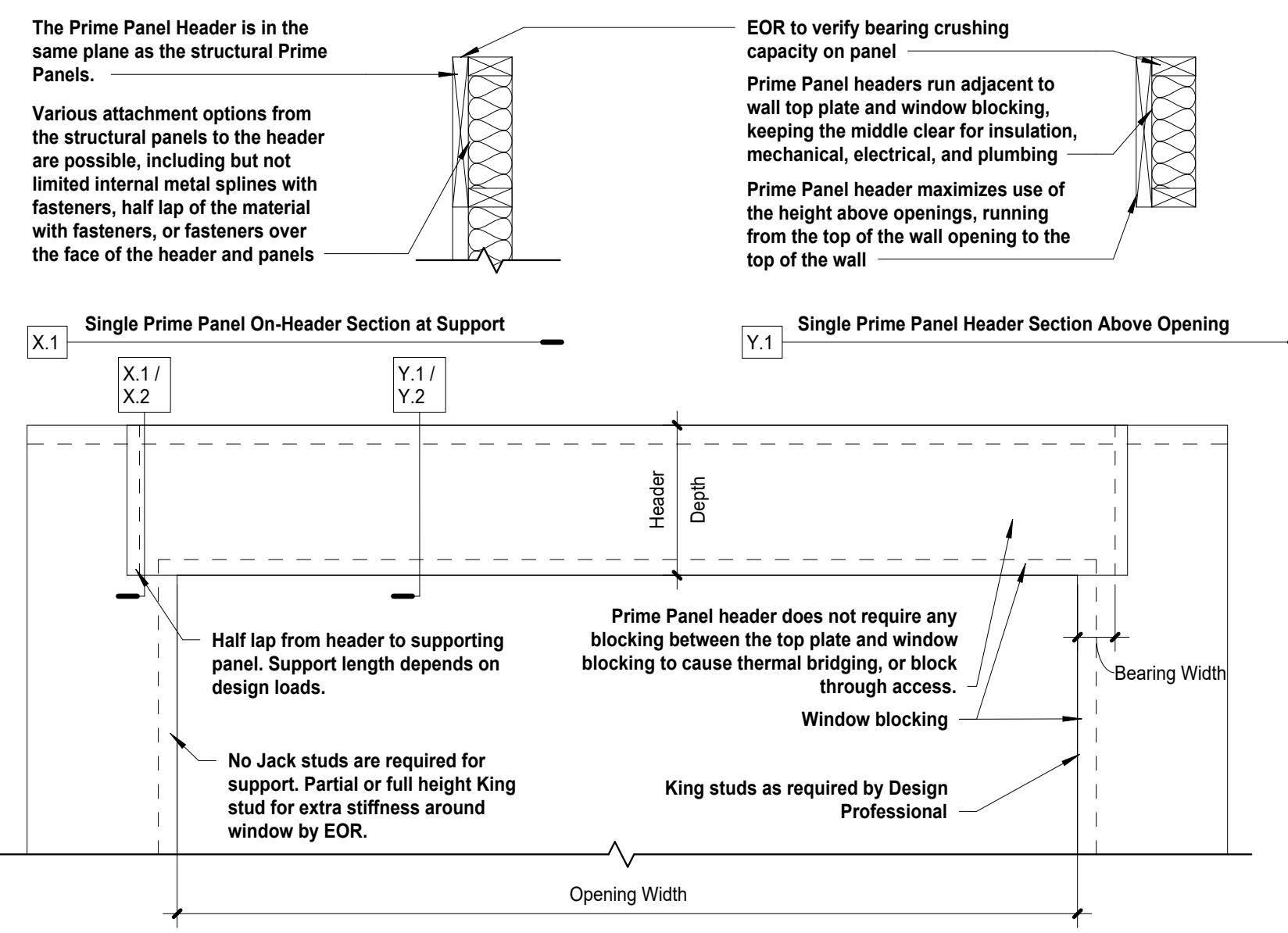
15 Curved Window Opening
1" = 1'-0"



Interior Prime Panel Top Plate & Bottom Plate (Section View)

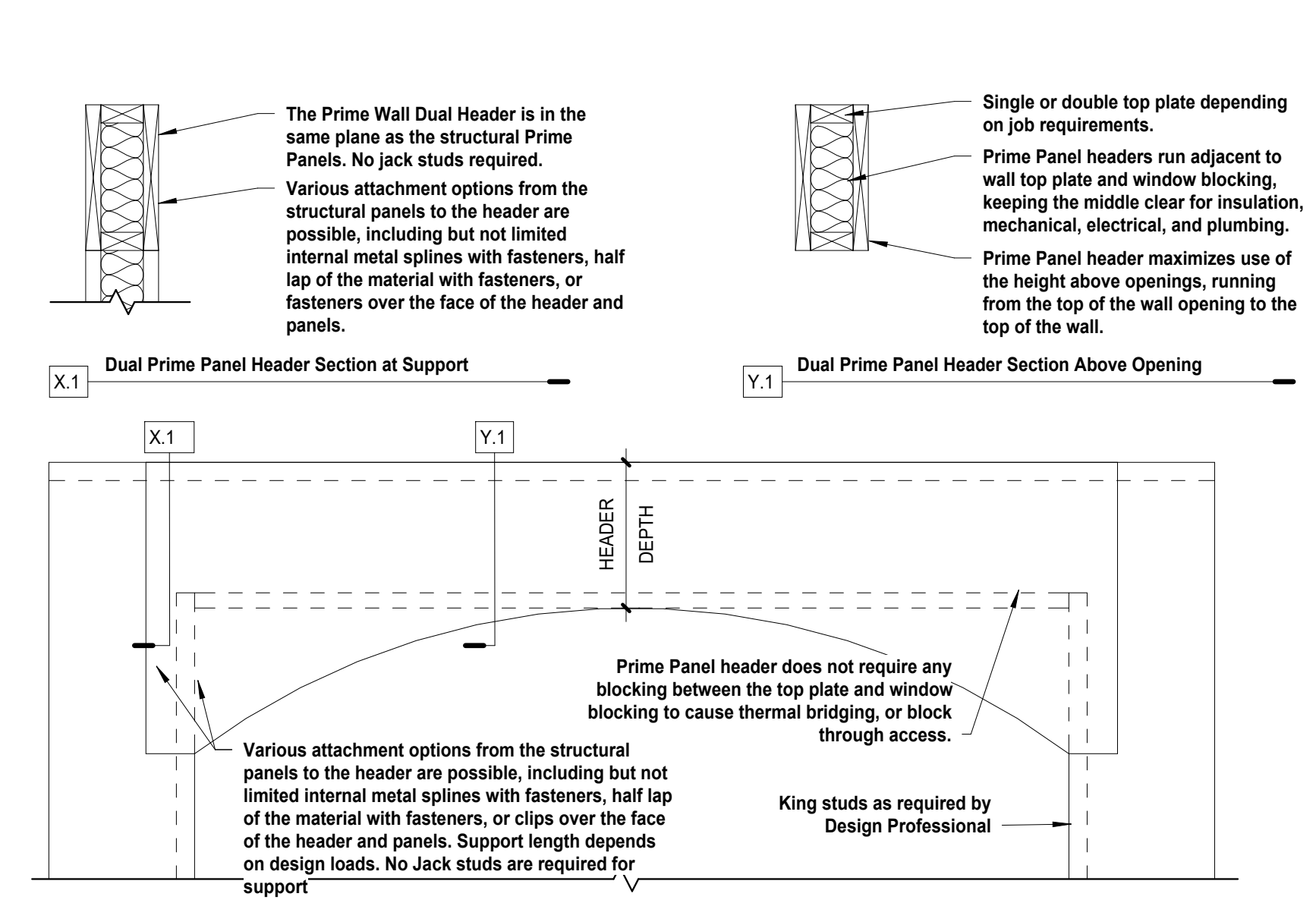
20 T&B plate - Interior
1" = 1'-0"

HEADER SPAN TABLE				
Header Type	Max Opening Width (ft)	Min Header Depth (in)	Min Bearing Length (in)	Edge Blocking Requirement



Prime Panel On-Edge Header Elevation

14 On-Edge Headers
1" = 1'-0"



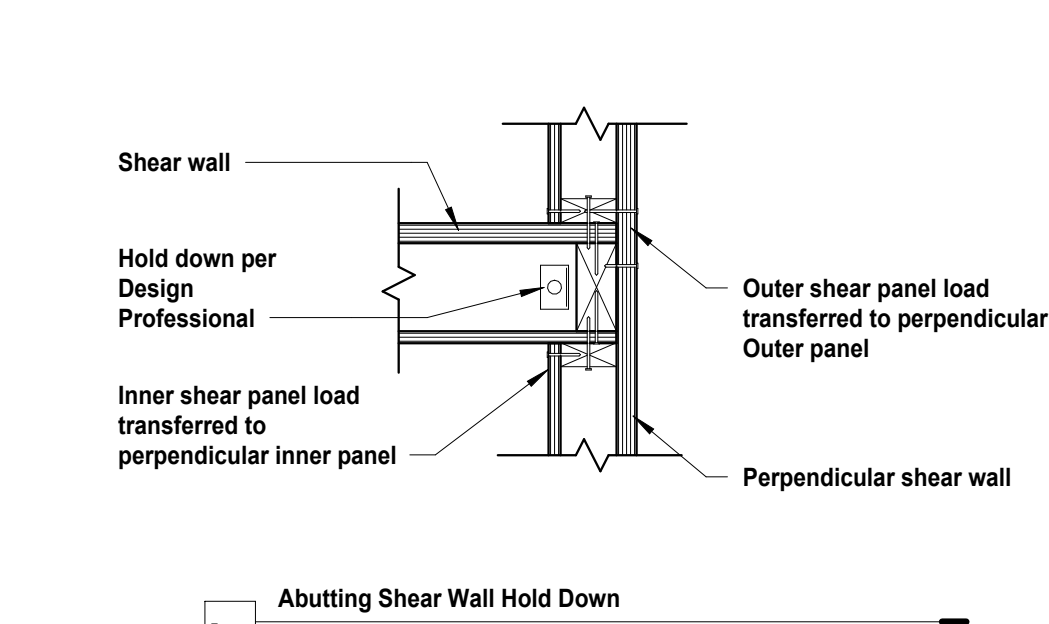
Curved Prime Panel On-Edge Header Elevation

15 Curved Window Opening
1" = 1'-0"

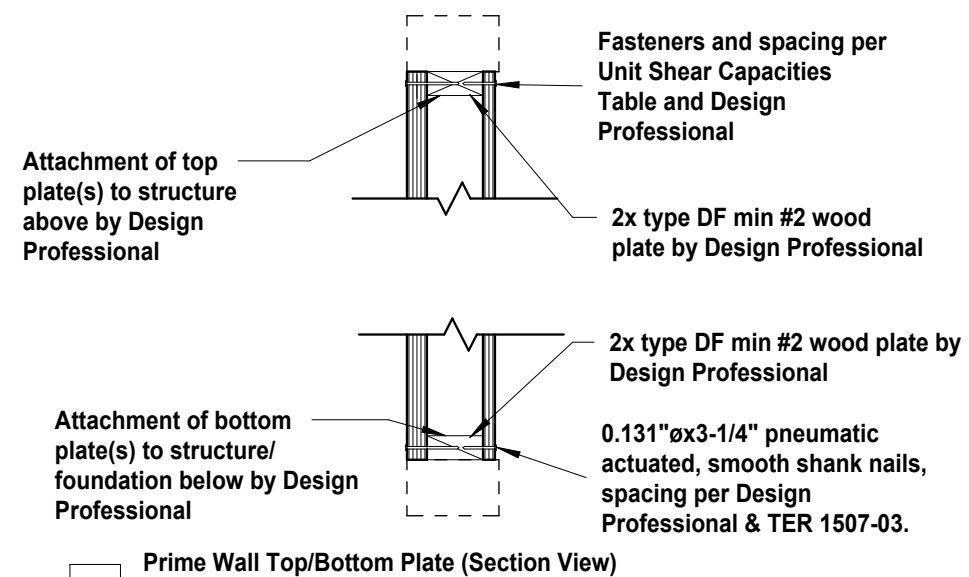
17 Window Opening with Conventional Header by Design Professional
1" = 1'-0"

Typical Prime Wall Details (Monoshear)

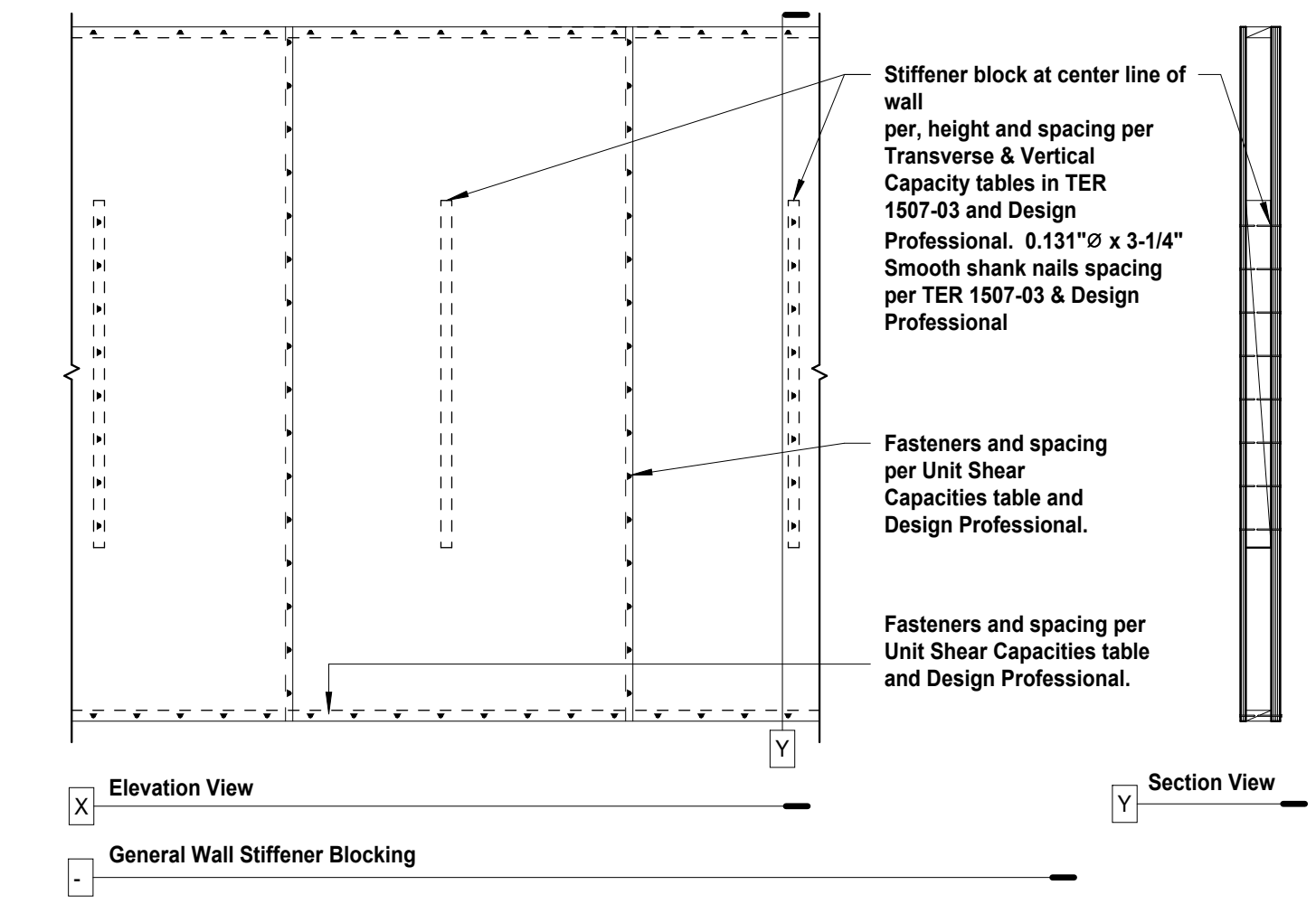
Project Number	Project Number
Date	1/22/2026
Drawn By	MM
Checked By	NA
Scale	1" = 1'-0"



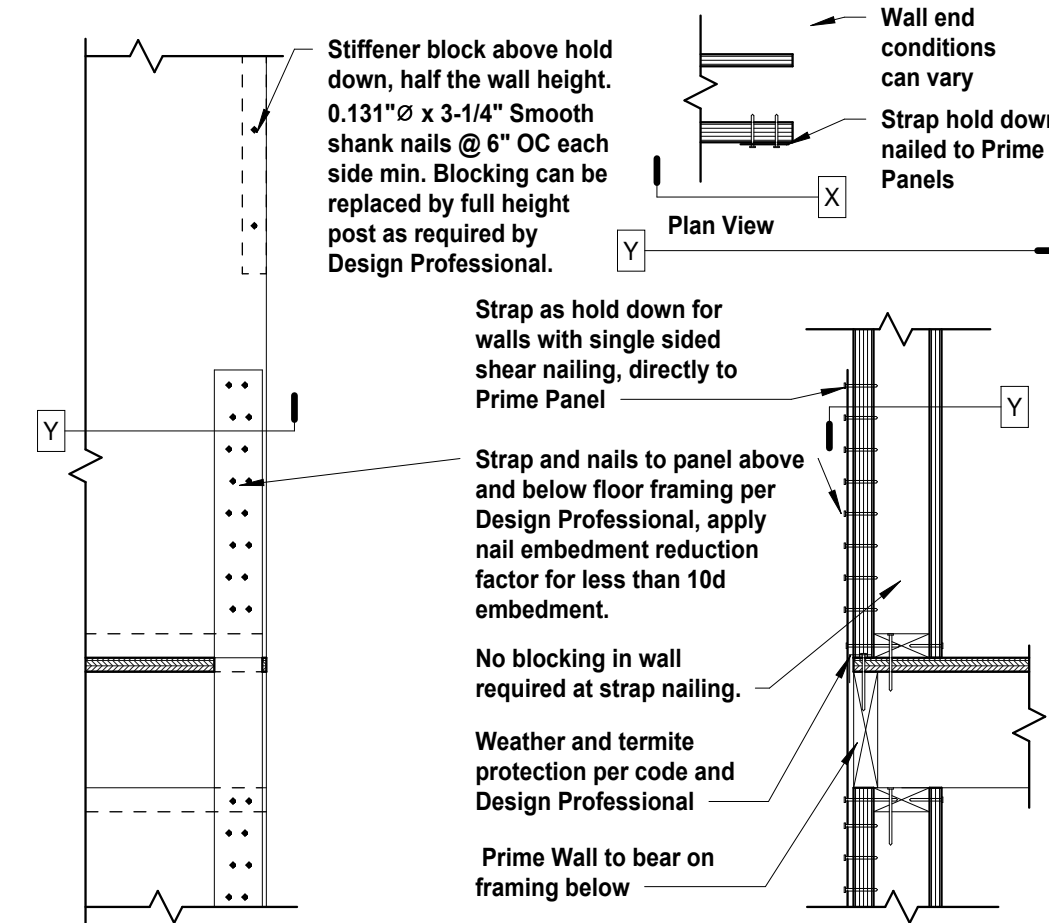
1 Abutting Hold downs
1" = 1'-0"



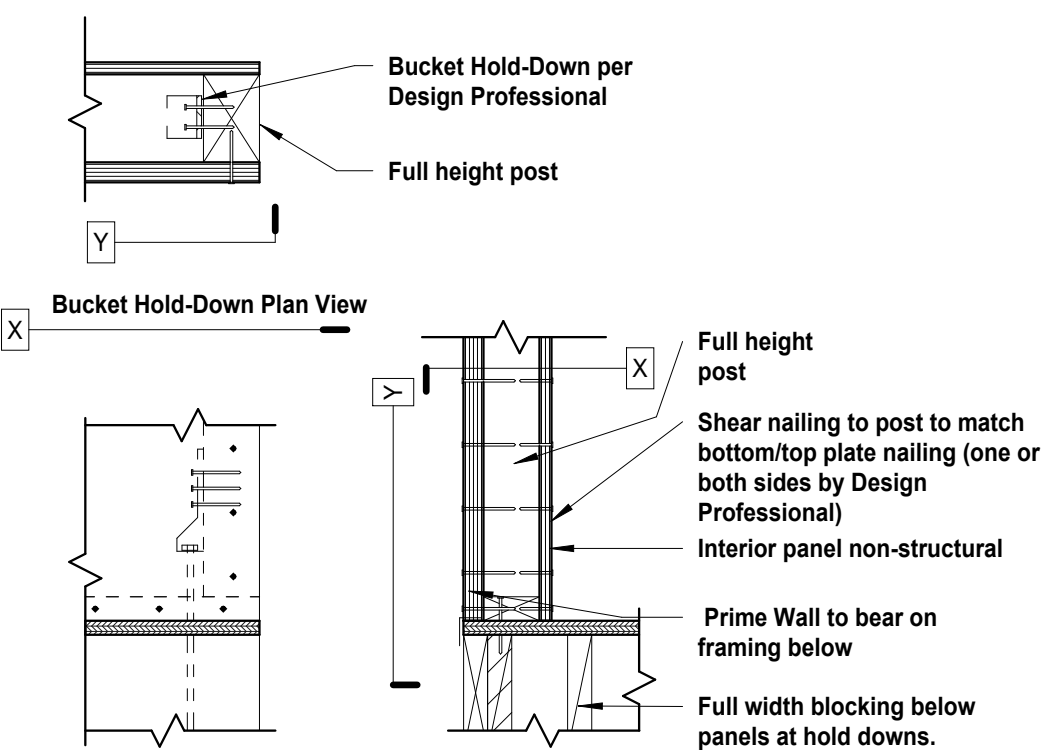
2 Top/Bottom Plate only
1" = 1'-0"



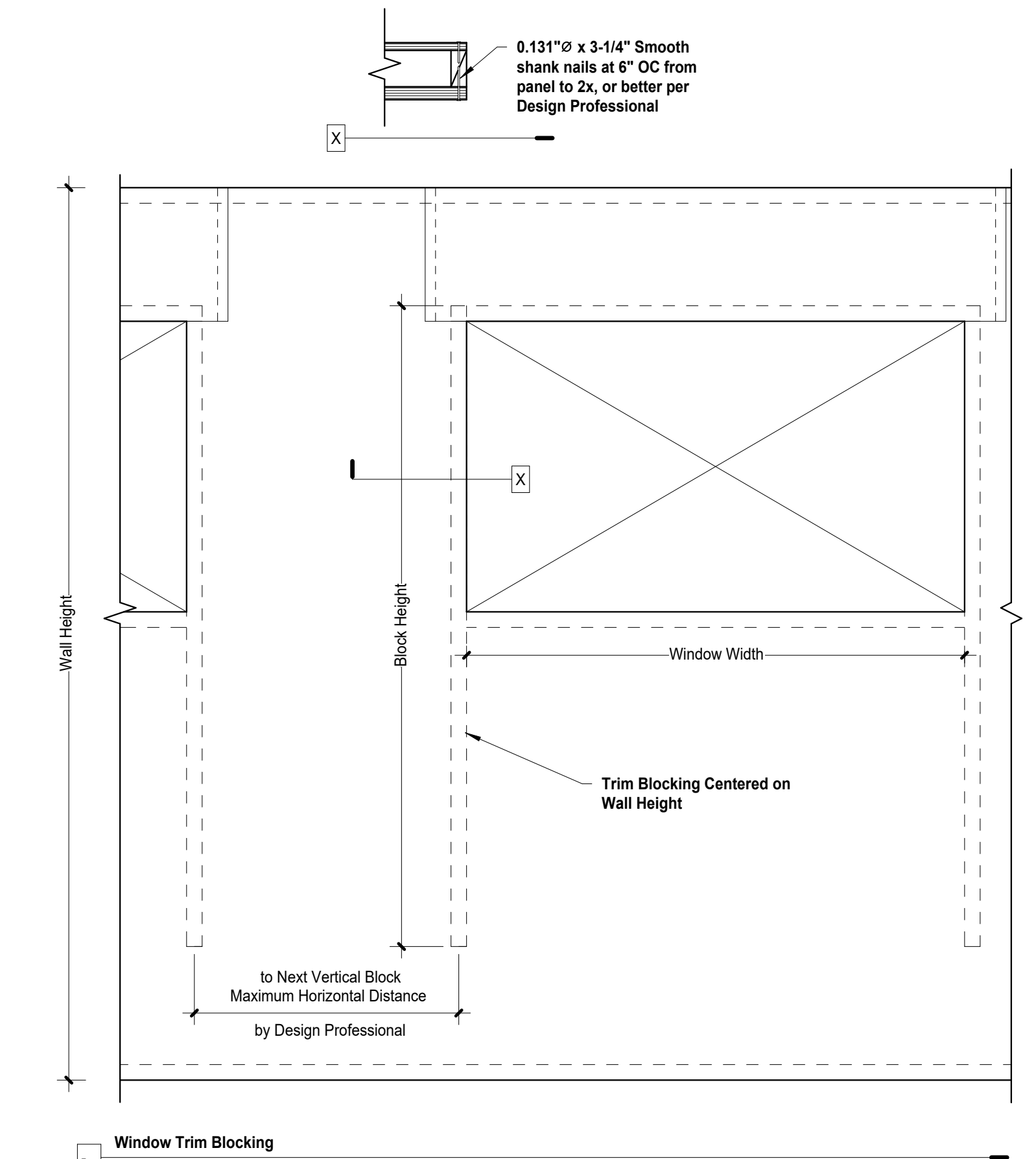
3 General Wall Stiffener Blocking
1/2" = 1'-0"



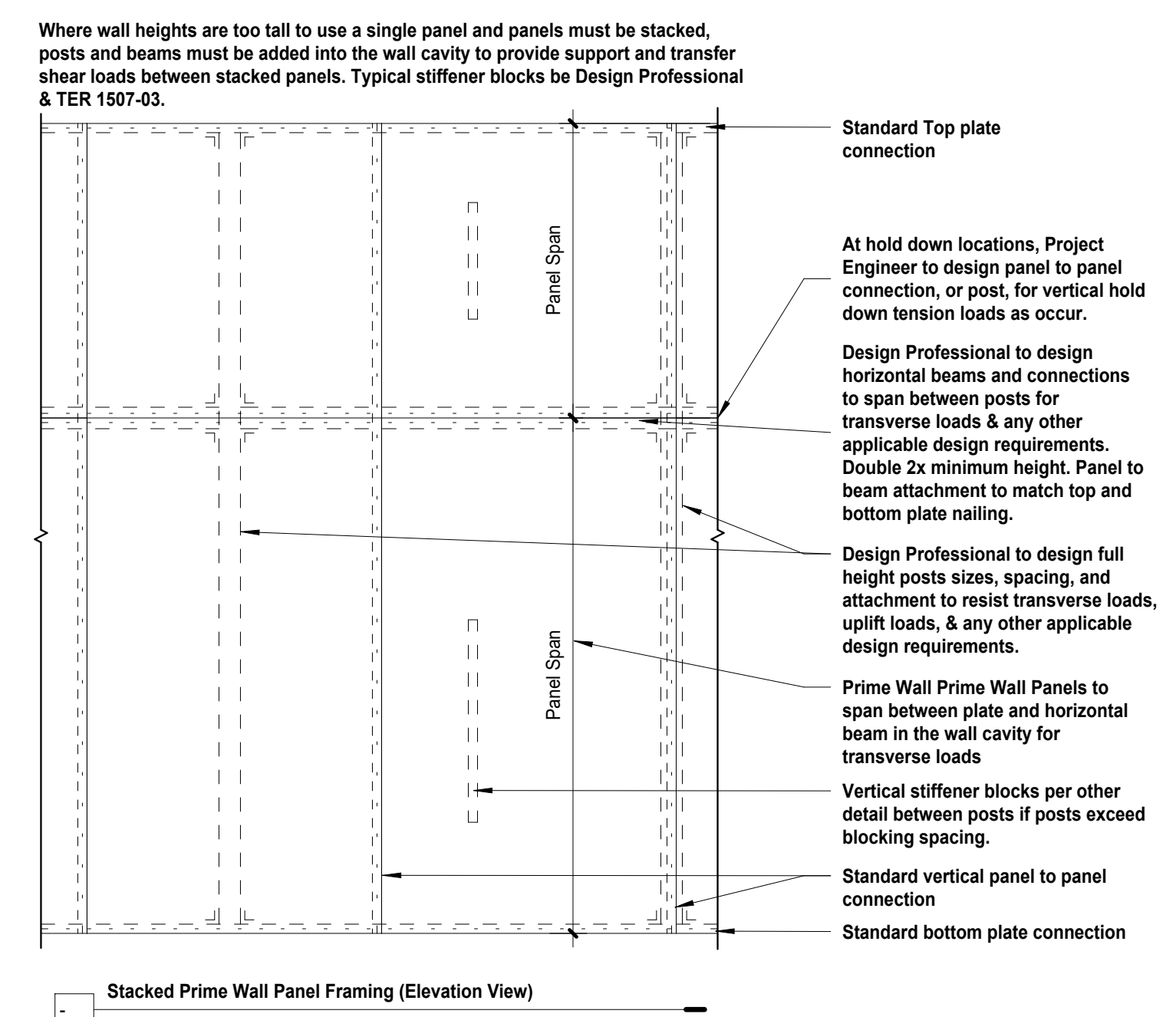
6 Strap Hold-Down to Prime Panel
1" = 1'-0"



7 Bucket Hold-Down to Prime Panel
1" = 1'-0"



9 Window Trim Blocking
1" = 1'-0"



10 Tall Wall Framing
1/2" = 1'-0"



www.GBT.build

Typical Prime Wall Details (Monoshear)

Project Number	Project Number
Date	1/22/2026
Drawn By	JB
Checked By	NA
Scale	As indicated

2

1/26/2026 8:59:54 AM