



Fork Creek Residence

Fast, Accurate and Simple

(April 1, 2021)

3 laborers | 4 hours | 2,800 square feet installed



BAMCORE®

Fork Creek Residence

Lowering the Carbon, Cost and Labor the BamCore Way

8500 Sq Ft Custom Residence in Draper, Utah



Walkout Basement

Concrete prepped 1 week before BamCore installation, floor for basement poured 2 days prior BamCore panel install



First Panel Installed

Panel ID: WLE-1-101
W = Wall
L = Load Bearing
E = Exterior Run
1 = Wall #1
101 = Panel 101



Hold Down Inspection Openings

Hold-down inspection openings allow inspectors to verify hold-downs installed to plan.

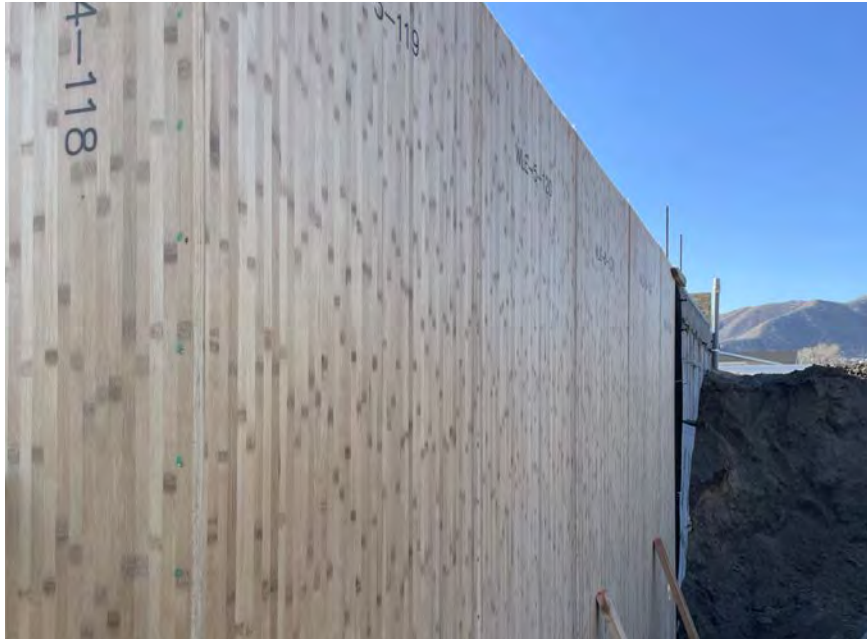


BAMCORE®

Fork Creek Residence

Lowering the Carbon, Cost and Labor the BamCore Way

8500 Sq Ft Custom Residence in Draper, Utah



Exterior Panel Run

Perfectly straight, flush and true across 24'



Complete Exterior Panel Run installed

- No waste
- No misses
- Millimeter accuracy



BAMCORE®

Fork Creek Residence

Lowering the Carbon, Cost and Labor the BamCore Way

8500 Sq Ft Custom Residence in Draper, Utah



BamCore Proprietary In-Line Headers (exterior run)

- Precut to millimeter accuracy
- Marked for fast installation
- Design dependent but the In-Line header can span 9 feet without a traditional wood header



In-Line Header Details

- Headers lock quickly into position for square and plumb windows and doors
- No Cutting
- Insulation cavity is preserved between inside and outside run
- Interior and exterior runs



BAMCORE®

Fork Creek Residence

Lowering the Carbon, Cost and Labor the BamCore Way

8500 Sq Ft Custom Residence in Draper, Utah



Interior Run

- Interior facing panels have a factory installed MDO paper applied to the face of the panel allowing you to eliminate drywall. Just tape and texture straight to the panel surface!
- Red printed nail location dots
- Round insulation blow-in holes



Completed Interior Run

- Headers locked into position
- Yellow painted lines show electrician the cable locations for switches and outlets



Insulation Blow-in Hole

- Precisely cut for insulators to blow in from multiple locations throughout the walls face

Fork Creek Residence

Seeing is Believing. Installing Interior Panels



Panel Installation

Interior panels slide easily into position and are perfectly aligned



Corner Panels

Corner panels butt perfectly for true, plumb and square corners every time



Aligning With Shear Post

Panel aligns perfectly with shear post

The BamCore framing solution is installed 50% faster than a traditional stick build.



BAMCORE®

Fork Creek Residence



BAMCORE®